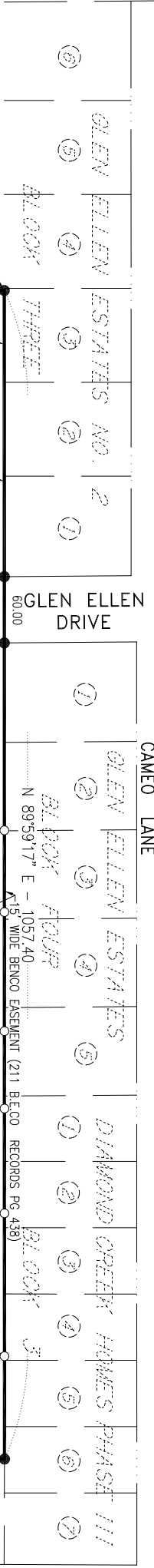


PARCEL 531

MINNESOTA DEPARTMENT OF TRANSPORTATION
RIGHT OF WAY PLAT NO. 07-53



NE CORNER
PARCEL 531

NORTH LINE
N.W. 1/4-SEC. 21
20' UTILITY
EASEMENT

R-1 ZONE
ONE-FAMILY DWELLING DISTRICT
SETBACK REQUIREMENTS - CITY OF MANKATO

BUILDING SETBACKS
FRONT 30 FEET
SIDE 6 FEET
REAR 25 FEET

OUTLOT C

PARCEL	SOFT.
BLOCK 1 LOT 1	239769
BLOCK 2 LOT 1	12409
BLOCK 2 LOT 2	10500
BLOCK 2 LOT 3	10500
BLOCK 2 LOT 4	9750
BLOCK 2 LOT 5	8994
BLOCK 3 LOT 1	12861
BLOCK 3 LOT 2	13120
BLOCK 3 LOT 3	11975
BLOCK 3 LOT 4	12090
BLOCK 4 LOT 1	12304
BLOCK 4 LOT 2	10929
BLOCK 4 LOT 3	11753
BLOCK 4 LOT 4	14807
BLOCK 4 LOT 5	21468
BLOCK 4 LOT 6	13361
BLOCK 4 LOT 7	9574
BLOCK 4 LOT 8	8400
BLOCK 4 LOT 9	10411
BLOCK 4 LOT 10	13780
BLOCK 4 LOT 11	10792
BLOCK 4 LOT 12	8345
BLOCK 4 LOT 13	8400
BLOCK 4 LOT 14	8875
BLOCK 4 LOT 15	10070
BLOCK 4 LOT 16	9789
BLOCK 4 LOT 17	8400
BLOCK 4 LOT 18	8400
BLOCK 4 LOT 19	8400
BLOCK 4 LOT 20	11652
BLOCK 4 LOT 21	10735
BLOCK 4 LOT 22	16940
BLOCK 5 LOT 1	11228
BLOCK 5 LOT 2	8687
BLOCK 5 LOT 3	12111
BLOCK 5 LOT 4	12557
BLOCK 5 LOT 5	12303
BLOCK 5 LOT 6	11495
BLOCK 5 LOT 7	10488
BLOCK 5 LOT 8	10417
BLOCK 5 LOT 9	9398
BLOCK 5 LOT 10	9727
BLOCK 5 LOT 11	11846
BLOCK 5 LOT 12	11571
BLOCK 5 LOT 13	10117
BLOCK 5 LOT 14	10069
BLOCK 5 LOT 15	8400
BLOCK 5 LOT 16	8400
BLOCK 5 LOT 17	8676
BLOCK 5 LOT 18	10565
OUTLOT A	52902
OUTLOT B	42869
OUTLOT C	643732

PARCEL 531

(DESC.=1474.58)
N 00°54'36" W
1474.31
(MINN. D.O.T. R.O.W. PLAT 07-53 = 1474.31)

SEC. 21 - T108N - R26W
E. 1/2 - E. 1/2 - N.W. 1/4
SEC. 21 - T108N - R26W



9' EASEMENT RECORDS PG 438
NORTH-SOUTH CENTER LINE SECTION 21

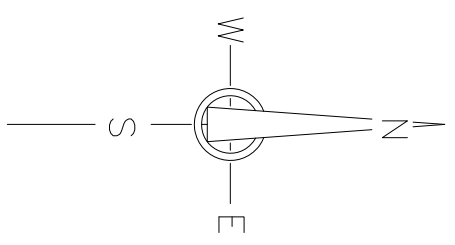
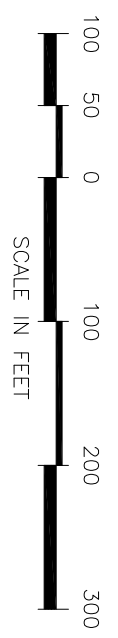
1849.05
S 00°56'52" E

N. 1/4 CORNER
SEC. 21-108-26
NORTHING = 211083.054
EASTING = 580715.272
BASIS OF BEARINGS
(MINNESOTA COUNTY COORDINATE SYSTEM -
BLUE EARTH COUNTY ZONE - NAD83 - 1986)

DANCING WATERS

CITY OF MANKATO

BLUE EARTH COUNTY, MINNESOTA



- INDICATES 1/2" DIA. X 20" LONG IRON PIPE SET WITH PLASTIC CAP MARKED BY LICENSE NO. 14701.
- INDICATES IRON PIPE MONUMENTS FOUND.
- LOT LINES
- UTILITY EASEMENT LINES
- RIGHT-OF-WAY LINE
- BEING 5 FEET IN WIDTH AND ADJOINING LOT LINES AND BEING 10 FEET IN WIDTH AND ADJOINING RIGHT-OF-WAY LINES, UNLESS OTHERWISE INDICATED ON THE PLAT.

- LEGEND**
- INDICATES ARC DISTANCE
 - INDICATES RADIUS LENGTH
 - INDICATES CENTRAL ANGLE
 - INDICATES POINT OF CURVATURE
 - INDICATES POINT OF TANGENCY